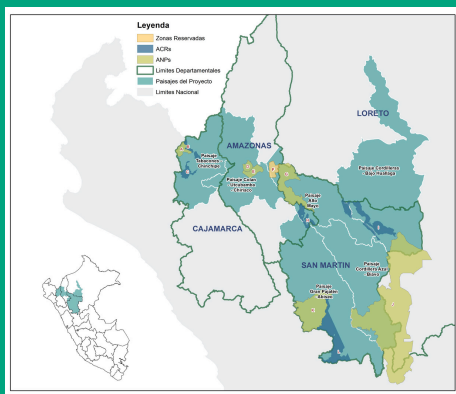


Peru - Deforestation Free Commodity Supply Chains in the Peruvian Amazon

GEF/FOLUR - PERU COFFEE LANDSCAPE INVESTMENT CARD

KEY STATS

- **Timeline:** 2023 –2029
- **Project Size:** \$13,561,467 (GEF amount)
- **GEF Implementing Agency:** United Nations Development Programme (UNDP)
- **Core Executing Partner¹:** Ministry of Environment of Peru (MINAM) – Vice Ministry of Strategic Development of Natural Resources



RELEVANCE & CHALLENGES

Peru faces significant challenges related to unsustainable food production, including habitat loss and deforestation. In 2023, 132,000 hectares of forest were **deforested**, of which an estimated 72% occurred on plots ≤ 5 hectares in size. Coffee production is one of the **drivers of deforestation** in Peru.

OVERVIEW & EXPECTED IMPACTS

The FOLUR country project in Peru aims to introduce sustainable, deforestation-free, and profitable commodity production models in the northwestern Amazon (Abiseo-Cóndor-Kutukú corridor) to combat deforestation and land degradation driven by unsustainable agricultural practices, particularly in coffee and cocoa.

The country project promotes responsible value chains and partnerships with major buyers of deforestation-free commodities. It targets critical jurisdictions, enhancing governance, improving the livelihoods of local communities, and promotes the conservation and restoration of key ecosystems, fostering connectivity between productive landscapes and natural areas to maintain key ecological functions, while also addressing social issues such as gender equity, child labor, and intercultural approach in the agricultural sector.

The following main activities are being carried out by the country project and reinforced by private sector investment:

- **Multi-stakeholder Governance:** Strengthening regional roundtables, which include workshops and events to engage local supply chain stakeholders, will enhance sustainable practices and identify market opportunities. These roundtables will actively involve farmer cooperatives and indigenous communities, with a strong emphasis on gender equity and inclusion. Additionally, the country project is promoting Cesiones en Uso para Sistemas Agroforestales (CUSAF), which are legal mechanisms that facilitate the transition to agroforestry systems, contributing to formalizing land tenure and enhancing ecological connectivity.
- **Landscape Approach:** Integrated Landscape Management (ILM) will be used to ensure sustainable management of the Abiseo-Cóndor-Kutukú corridor. This approach will facilitate multi-stakeholder engagement, planning and coordination, capacity building, policy development and monitoring and evaluation. In addition, sub-landscapes (including Alto Mayo and Tabaconas) will be created according to crop production to optimize management.

¹ Additional involved partners include: Ministry of Agrarian Development and Irrigation of Peru (MIDAGRI), Ministry of Production of Peru (PRODUCE), Ministry of Foreign Trade and Tourist (MINCETUR), Regional Government of Amazonas; Regional Government of Cajamarca; Regional Government of San Martín; and Regional Government of Loreto.



Peru - Deforestation Free Commodity Supply Chains in the Peruvian Amazon

GEF/FOLUR - PERU COFFEE LANDSCAPE INVESTMENT CARD

Peru's FOLUR country project expected impacts may contribute to the Sustainable Coffee Challenge sector-wide [2050 goals](#) and [2025 targets](#):

PROSPERITY & WELL-BEING



120,000

Beneficiaries (45% female)

RESILIENT SUPPLY



80,000 HA

of coffee landscapes under improved practices (LUIP).

STRENGTHEN DEMAND



Market opportunities for deforestation-free products

CONSERVE NATURE



67,885,652 TN

CO₂e mitigated

260,050 HA

of restored land



GET INVOLVED: To indicate interest in supporting this country program, please contact: dgefa2proy@minam.gob.pe and/or the Sustainable Coffee Challenge team at scc@conservation.org.



Visit www.sustaincoffee.org/landscapes to learn more, including about additional coffee country projects.

This publication was made in part by the support of:



GOOD GROWTH PARTNERSHIP
Led by UNDP



- **Restoration + Farmer Livelihoods:** Various restoration and conservation actions will be used to support coffee production, maintain ecosystem services and stimulate sustainable value chains and unlock socio-economic development opportunities.

By the end of the project in 2029, the livelihoods of 120,000 beneficiaries (45% female) will be improved through systemic and on-the-ground approaches, including deforestation-free commodities, land restoration, and conservation practices across 17 provinces in the regions of San Martín, Amazonas, Loreto, and Cajamarca. The initiative will achieve 1,310,412 hectares of landscapes under ILM; including 260,050 hectares of restored lands, contributing to the storage of 67,885,652 MT CO₂e mitigated.

CO-INVESTMENT OPPORTUNITIES



Active involvement and co-investment by the private sector will be critical to deliver on the program's targets and to ensure its long-term sustainability. Concrete opportunity areas for coffee supply chain actors – small, medium, and large – to complement and scale the program include:

RESILIENT +
DEFORESTATION-FREE
COFFEE

Supply chain stakeholders can facilitate access to improved coffee varieties—those that are high-yielding and resilient to climate change—while also enabling market integration in alignment with emerging regulatory frameworks such as the EU Deforestation Regulation (EUDR). This could include investments to support innovative approaches for polygon mapping as well as the provision of technical assistance related to EUDR.

CORPORATE NATURE +
CLIMATE TARGETS

Investments into on-farm to incorporate good agricultural practices, and landscape-level restoration and protection of ecosystems will enhance biodiversity, reduce emissions and sustain ecosystem services that coffee production depends on. These actions will support the delivery of ambitious corporate targets while benefitting farmers and indigenous communities.

GENDER INCLUSIVE
LANDSCAPE FINANCE

Contribute to the development of jurisdictional initiatives, with specific focus on gender equity and improved access to finance. The development of gender inclusive action plans will foster opportunities to create or strengthen market linkages leveraging networks of cooperatives and producer organizations.

Additionally, interested stakeholders will be invited and encouraged to participate in subnational multi-stakeholder initiatives or roundtables and to provide in-kind contributions.